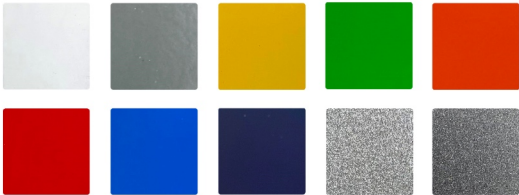




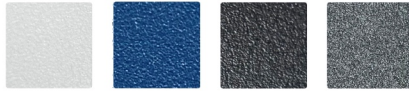
Premium Line: HC Cabinets

- **Material:** 16 gauge steel • **Construction:** Welded frames, Double-sided doors • **Finish:** Powder Coated • **Warranty:** Lifetime
- **Customization:** Extensive - Fully Modular • **Cabinet Depth:** Locker & Wall 24.5", 14", Base 24.5" • **Optional Overhead Cabinets:** Yes

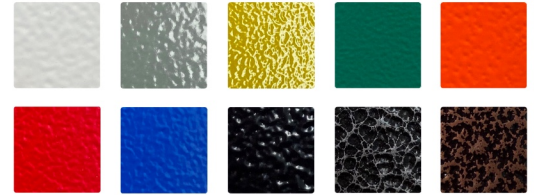
Available Colors: Smooth



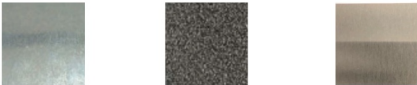
Sandtex



Textured



Worktop Finishes

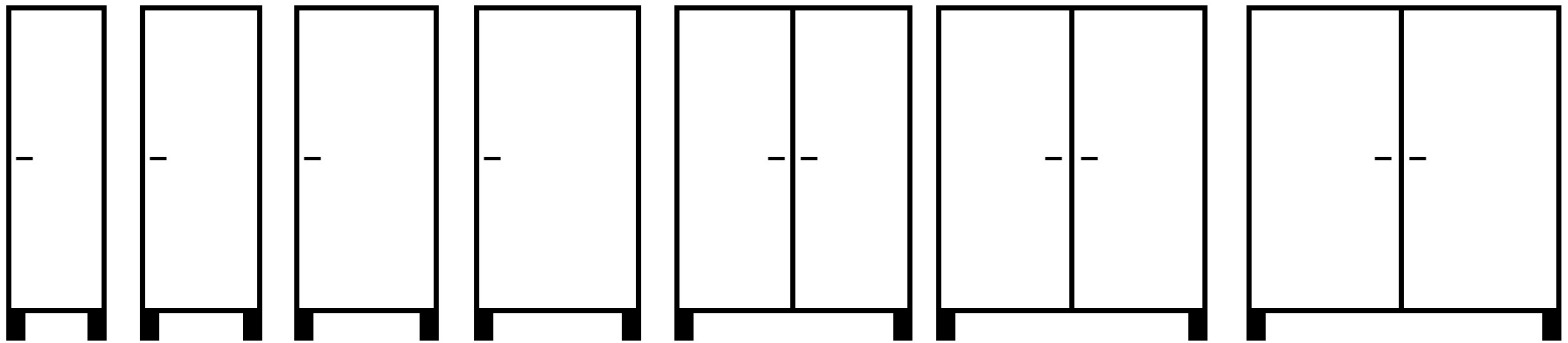


Galvanized
12g Steel

Powder Coated
12g Steel

Stainless Steel
16g Steel

Locker Cabinet Widths:



19 in.

24 in.

28 in.

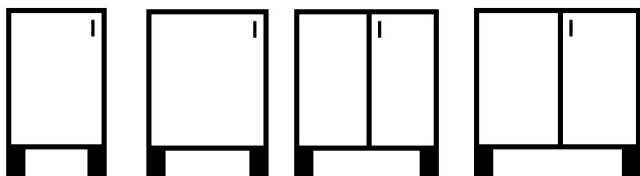
34 in.

48 in.

54 in.

66 in.

Base Cabinet Widths:



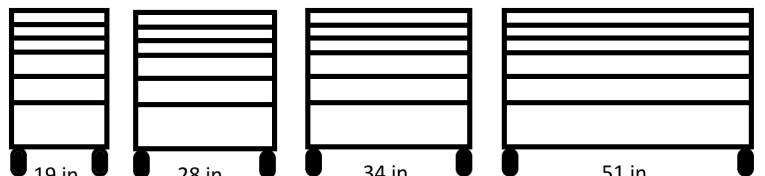
19 in.

24 in.

28 in.

34 in.

Tool Cabinet Widths:



19 in.

28 in.

34 in.

51 in.

Wall Cabinet Widths:



19 in.

24 in.

28 in.

34 in.

48 in.

51 in.

54 in.



66 in.

